

RE:VITALITY

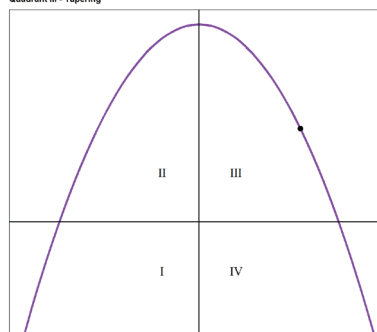
CONGREGATIONAL ASSESSMENT OF DEVELOPMENT/DECLINE STATUS (CADDs)

An assessment of your congregation's stage of development or decline by the leading experts on your congregation and context — you!

OVERVIEW

The Congregational Assessment of Development/Decline Status (CADDs) is a survey-based self-assessment tool designed to provide your congregation with a consistent and objective way of answering the question “Where are we ... really?” CADDs is simple, straightforward and nonintrusive — it does not require anyone from outside the congregation to assist in the assessment. Instead, CADDs relies on input from the people who know your congregation and context better than anyone else: you.

Your overall result:
Quadrant III - Tapering



CRITICAL MEASUREMENTS

CADDs measures three critical elements of development and decline to evaluate your congregation's well-being. The first is sustainability (also called viability). It reflects the congregation's ability to continue ministry. The second element is adaptability, which measures the members' openness to change. The third element considers the balance of the outward focus and inward focus of the congregation. These critical measurements can be demonstrated on a standard distribution curve that spans four quadrants of development and decline.

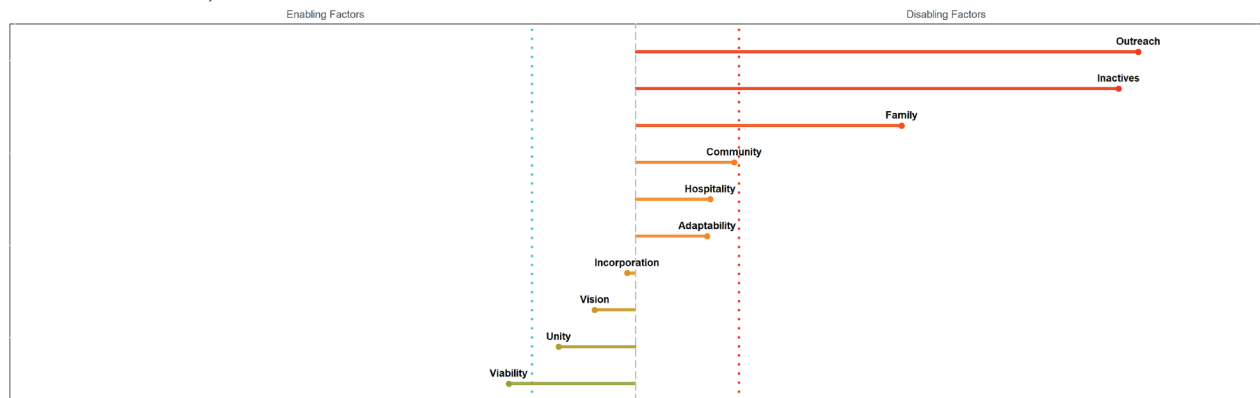
THE CADDs SURVEY

CADDs uses a scientifically-developed 95-question survey to measure the three critical elements of congregational well-being. The survey is designed to be completed by any and all members of the congregation and other people with an interest in the congregation (e.g., non-member school families). The survey is completed online (an offline option is available). It takes about 20–25 minutes to complete.

THE CADDs REPORT

The results of the CADDs survey are presented as a single-page, graphical report. This simple report provides a clear snapshot that answers the question “Where are we ... really?” In a diagram based on the *Stages of Congregational Development Decline* diagram, the report identifies an overall status that indicates the stage of development or decline. In a separate line graph, the report identifies the factors that are contributing to your congregation’s status. These factors are listed in order from the factors having the most negative impact (things you need to do better) to the factors having the most positive impact (things you are doing well). Having the results of the CADDs survey in a concise, graphical report rather than detailed textual report helps you avoid “paralysis by analysis” while providing you with a clear course of action.

Relativized results in each factor of vitality:



BY YOU, FOR YOU

The CADDs report is sent directly to your congregation. Unless otherwise agreed upon, the results are not shared with any other entity. The purpose of the CADDs report is to assist you with understanding the factors driving your stage of development or decline in order to identify which *re:Vitality* resources would be most beneficial to your congregation. However, there is no obligation for you to take any further action after completing CADDs.

COST

CADDs was developed and is supported by the LCMS Office of National Mission (ONM). ONM provides CADDs to LCMS congregations at no cost.

GETTING STARTED

CONTACT US for more information about or to begin the process of using CADDs for your congregation at

 WOR@lcms.org

FOR MORE INFORMATION about *re:Vitality* please visit

 lcms.org/revitalization

 facebook.com/LCMSreVitality